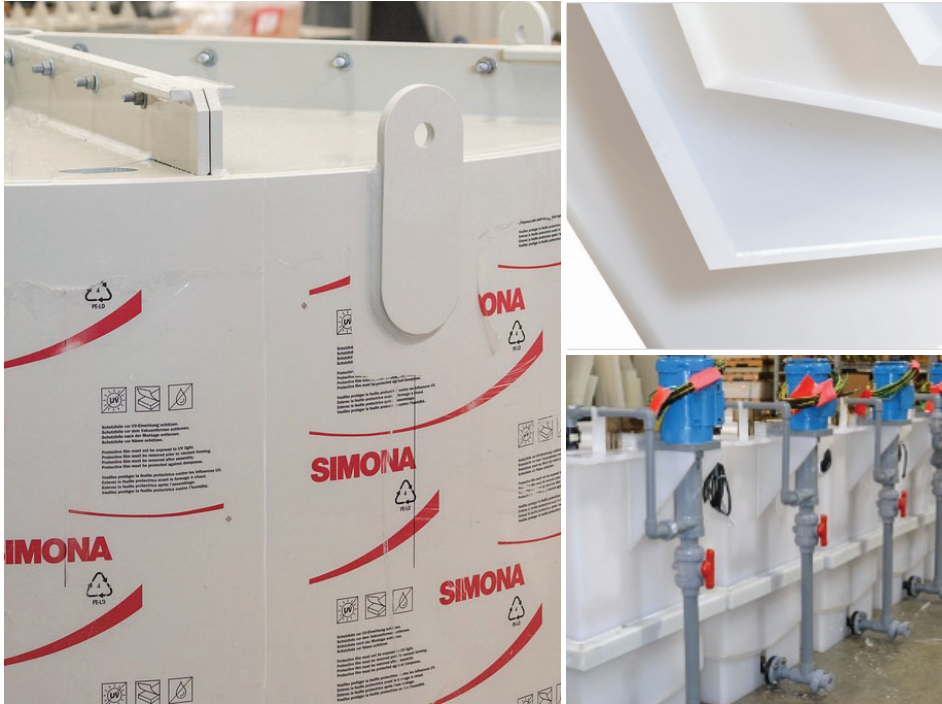


# SIMONA® Polypropylene Homopolymer (PP-H)

*Provides exceptional impact resistance in chemical or corrosive applications.*



## Advantages

- Excellent chemical and corrosion resistance
- Easy to fabricate, weld, and machine
- Exceptional structural strength, rigidity vs. HDPE
- No moisture absorption
- Normal impact strength
- USP Class VI approved

## Applications

- Chemical tank and equipment construction
- Orthotic and prosthetic
- Laboratory and cleanroom cabinetry and furniture
- Food processing components
- Air conditioning and ventilation systems

## Configurations

- Sheet sizes
  - 48 x 96, 48 x 120, and 60 x 120 in.
- Gauges
  - .062 to 2.0 in. (1.57 to 50.8 mm)
- Colors
  - Natural
  - White
  - Black
  - Eurogrey
- Texture
  - Smooth/Smooth
  - Matte/Matte
- Masking:
  - 1 or 2 sides available
- Custom colors and sizes on request

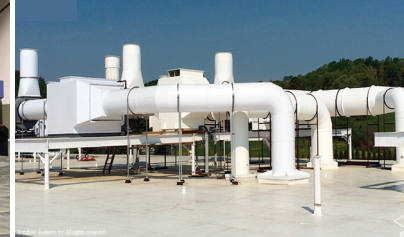
SIMONA® PP-H naturally offers permanent heat resistance, high chemical and corrosion resistance, and excellent tensile strength. It provides standard impact strength with greater rigidity than other polypropylene materials. Homopolymer polypropylene is the most commonly used polymer of the polypropylene family.

The high strength-to-weight ratio of SIMONA® PP-H in thermoforming and corrosive environments make it the material of choice for various applications, such as chemical tanks, HVAC systems, and food processing components. In addition, PP-H is ideal for use in fabricated parts, plating /anodizing process equipment, and spacers, as well as machined orthotics and prosthetics.

SIMONA PP-H is USP Class VI approved for use within medical environments.

During fabrication and machining, SIMONA PP-H maintains exceptional flatness and dimensional stability for high production yields and finished part quality.

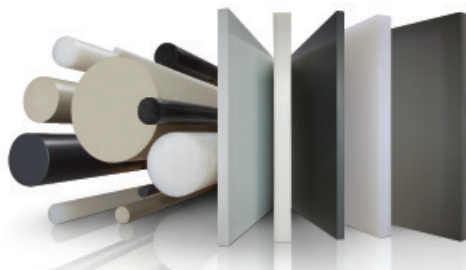
Complementary SIMONA PP-H solid rod and weld rod are also available.



## PROPERTIES SIMONA® PP-H

PROPERTY, Units of Measure <sup>1</sup>	Test Method	TYPICAL VALUES	
		SIMONA® PP-H	
Specific Gravity	ASTM D792	0.905 g/cc	
Water Absorption, %	ASTM D570	< 0.01	
<b>MECHANICAL</b>			
Tensile Strength @ Yield	ASTM D638	4,800 psi	33.09 MPa
Elongation @ Break, %	ASTM D638	> 100	
Flexural Modulus	ASTM D790	195,000 psi	1,344 MPa
Notched Izod Impact	ASTM D256	0.9 ft-lb/in.	48.06 J/m
Hardness, Shore D	ASTM D2240	70	
Coefficient of Expansion x 10 <sup>-5</sup>	ASTM D696	8.88 in./in.,F°	15.8 mm/mm, C°
<b>THERMAL</b>			
Continuous Service Temperature	Maximum	212° F	100° C
Melting Point	ASTM D3418	312° F	155.6° C
Heat Deflection Temp @ 66psi	ASTM D648	210°F	98.9° C
Heat Deflection Temp @ 264psi	ASTM D648	-	-
<b>REGULATIONS</b>			
Flammability	UL94	Yes	
Food Contact	FDA Reg. 21 Chapter 1 part 177.2510	Yes	
USP	Class VI	Yes	

<sup>1</sup> All tests at 73° F (22.8° C) in dry conditions unless otherwise noted.



SIMONA AMERICA Industries offers the widest product range of PVC sheet and rod – FM 4910 rated sheet – chemical resistant materials from PVC, PP and PE to fluoropolymers – orthotics and prosthetics sheet – SIMONA Boltaron® aircraft sheet – plus proven products for boat building, outdoor furniture and many other industries.

### DISCLAIMER AND LIMITATION OF WARRANTY:

All information contained herein is believed by SIMONA AMERICA Industries to be reliable. Typical properties are based on laboratory tests conducted on material samples in accordance with standard test methodology. SIMONA AMERICA Industries makes no express or implied warranty that its products will perform in accordance with the data in all conditions and circumstances. To determine suitability for use, users must test applications under actual operating conditions. As a result, ALL EXPRESS OR IMPLIED WARRANTIES IN CONNECTION WITH SIMONA AMERICA Industries PRODUCTS INCLUDING WARRANTIES OF MERCHANTABILITY AND FITNESS FOR A PARTICULAR PURPOSE ARE EXPRESSLY DISCLAIMED.

**CURBELL**  
PLASTICS

**1-888-CURBELL**

[www.curbellplastics.com](http://www.curbellplastics.com)

Curbell Plastics is a proud supplier of SIMONA America materials.

### SIMONA AMERICA Industries

101 Power Blvd.  
Archbald, PA 18403  
Phone 1 866 501 2992  
Fax 1 800 522 4857  
sales@simona-america.com  
www.simona-america.com