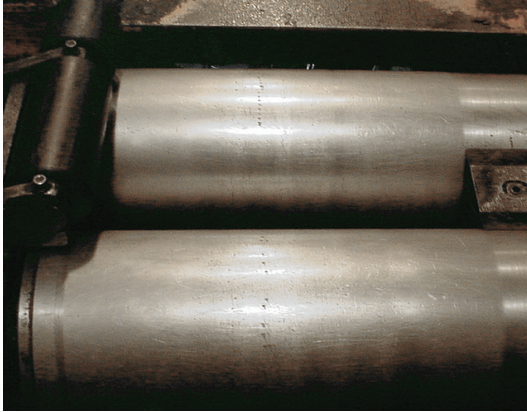


C-TEK® RW™

Disposable Protective Covering



C-TEK® RW™ is widely used for:

- Wheel alignment roller covers
- Guide roller covers
- Protective covers for conveyor rollers

Performance characteristics:

- Reduces roller cleaning time
- Reduces machine contamination from loose debris build-up
- Reduces injuries from dangerous scraping tools
- Reduces operator exposure to harsh cleaning chemicals
- Prolongs the life of metal roller surfaces

Dirt, grease, and other contamination can build up on the wheels and rollers that are used in automobile assembly and other operations. Many times machinery must be taken out of service for cleaning. The cleaning process can be labor intensive and may expose operators to strong chemicals.

C-TEK® RW™ is a proprietary adhesive-coated plastic film that acts as a disposable protective surface for metal wheels and rollers. A length of C-TEK® RW™ is applied to each clean roller and then removed when contamination build up reaches unacceptable levels. This significantly reduces the difficulties and downtime associated with manual cleaning.

C-TEK® RW™ STANDARD SIZE AVAILABILITY

ITEM NUMBER	SIZES
40718	9.5" x 22"
28854	15" x 22"

Custom sizes available on request. Contact your Curbell representative for information on these and other custom sizes.