



TUFFAK CA – CLASS A FLAMMABILITY RATING IN POLYCARBONATE SHEET

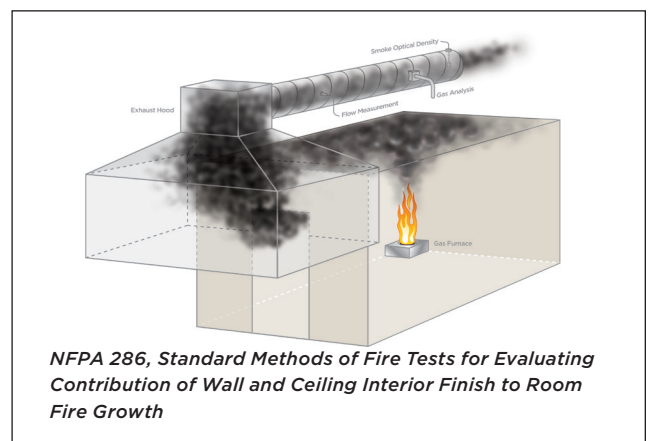
TUFFAK CA is an optical grade transparent polycarbonate sheet designed to meet International Building Code (IBC) Class A flammability for interior wall and ceiling applications. This sheet product is virtually unbreakable, has high temperature resistance, high clarity and passes the National Fire Prevention Association (NFPA) 286 flammability requirement.

- » Meets IBC flammability for Class A performance
- » Passes NFPA 286
- » UV stable
- » Thermoformable
- » Four approved attachment methods: (see page 2)
 - Direct to wall with four panel screws
 - Wall standoffs
 - Wall H-channels for seamless appearance
 - Ceiling standoff/hanger bars

Mounting Gauges

Walls: 0.118" - 0.236"

Ceilings: 0.118" - 0.500"



Packaging

0.118"	48" x 96"	85 sheets
0.236"	48" x 96"	42 sheets
0.500"	48" x 96"	20 sheets

- » Standard and Diffusing Colors
- » Patterns
- » Hard coat - TUFFAK CA-AR

These suggestions and data are based on information we believe to be reliable. They are offered in good faith, but without guarantee, as conditions and methods of use are beyond our control. We recommend that the prospective user determines the suitability of our materials and suggestions before adopting them on a commercial scale.

TUFFAK-CA[®]

POLYCARBONATE SHEET

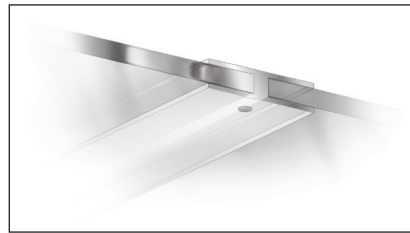
TUFFAK CA has been fire tested and certified in numerous installation configurations; both on and off wall and off ceiling. For maximum fire resistance, TUFFAK CA meets IBC code compliance for Class A performance when installed as outlined below.

Grade	Location	Attachment	Gauge	Distance from Ceiling	Distance from Wall	Rating
TUFFAK CA	Ceiling	Standoffs / Hanger Bars	0.118" - 0.500"	≥ 2"		Class A Equivalent
	Wall	On wall at corners	0.118" - 0.236"		0"	Class A Equivalent
	Wall	Standoffs	0.118" - 0.236"		≥ 0.5"	Class A Equivalent
	Wall	Plastic Channels	0.118" - 0.236"		0"	Class A Equivalent

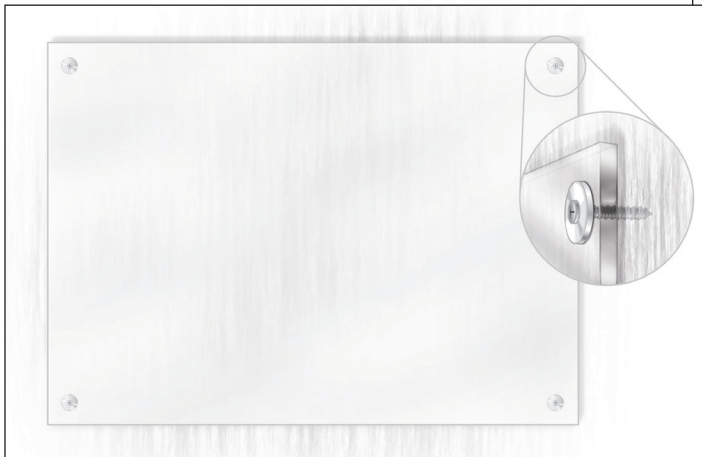
Ceiling Stand-offs / Hanger bars



Rigid plastic H-channels



Cap / Barrel Stand-offs mounts to wall



Screw / Washer attachments on corners

CURBELL
PLASTICS

1-888-CURBELL

www.curbellplastics.com

Curbell Plastics is a proud supplier of Plaskolite materials.