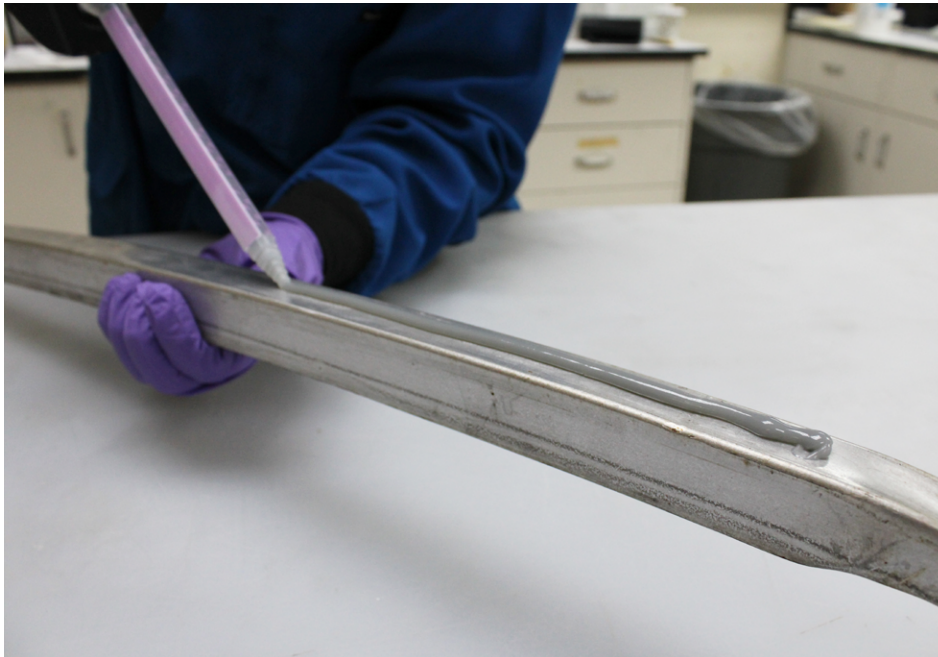




# MA8105 Next Generation Multi-Material Bonder



## The Most Versatile, Easy to Use, Structural Adhesive Ever!



Plexus MA8105 is the result of more than 35 years of experience creating and formulating high performance MMA adhesives.

This next generation adhesive lowers assembly time resulting in high throughput and consistent, reliable production.

### Benefits

#### Primerless to More Materials

Bonds metal, coatings, most plastics including nylon, composites and rubbers with little or no surface preparation.

#### Easy to Use

1:1 Mix Ratio that can handle off ratio cure  
Thixotropic bead that doesn't sag

#### Faster Unclamp Times

Parts are ready to move in 12 – 15 min

#### High Durability

High strength, matched with superior elongation and fatigue resistance.

#### Low Odor

#### High Temperature Resistance

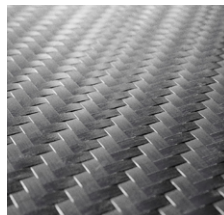
### Key Substrates



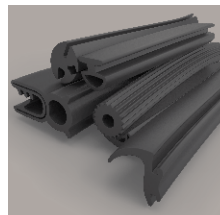
*Metals*



*Thermoplastics*



*Composites*



*Rubber*



## Typical Properties

Mix Ratio	1:1
Working Time	3 - 6 min
Time to 50 psi	12 - 14 min
Time to 500 psi	14 - 16 min
Tensile Strength	3,000 - 3,500 psi (20.7 - 24.1 MPa)
Tensile Modulus	196 KSI (1.35 GPa)
Elongation	20 - 40%

## Packaging

Item no.	Description
81056	50 ml Cartridge
81050	400 ml Cartridge

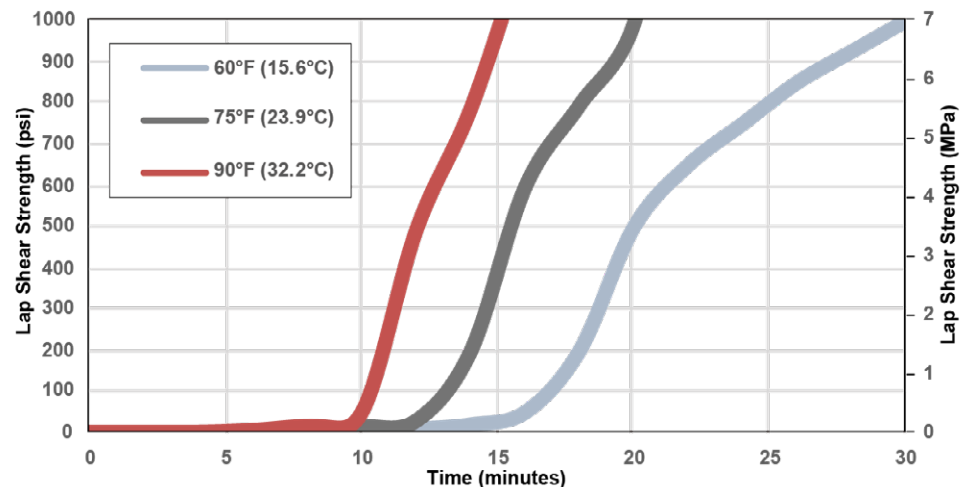
## Dispensing Equipment

Item no.	Description
3333	Static Mixer
30020	400 ml 1:1 Manual Dispenser
30010	400 ml 1:1 Pneumatic Dispenser

## Lap Shear Results

Hot Dipped Galvanized Steel	2,178 psi (15.0 MPa)
Aluminum	2,694 psi (18.6 MPa)
Aluminum 1000 hr Salt Fog	2,436 psi (16.8 MPa)
Stainless Steel	2,961 psi (20.4 MPa)
CRS	3,083 psi (21.3 MPa)
Fiberglass	2,398 psi (16.5 MPa)
Polycarbonate	732 psi (5.0 MPa)

## Typical Cure Speed at Various Temperatures



The technical information, recommendations and other statements contained in this sheet are based upon good faith tests or experience that ITW Performance Polymers believes are reliable, but the accuracy or completeness of such information is not guaranteed. The information provided is not intended to substitute for the customers' own testing.

©ITW Performance Polymers, January 2022.